

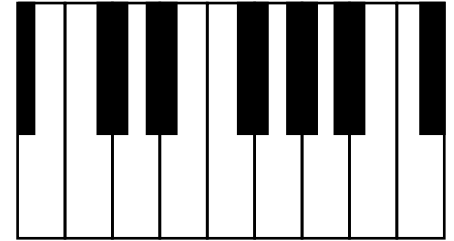
The whole/half-step pattern for a major scale is W-W-H-W-W-W-H (W=whole, H=half).

1. Using the pattern, notate the following major scales with whole notes.

The first note for each scale is given for you. Use the keyboard to help you work out the rest.

2. Draw a V between the 3rd-4th and 7th-8th notes.

3. Write in the letter names for each note as your last step.



The scale of C major is done for you as an example.

C MAJOR

F MAJOR

C D E F G A B C

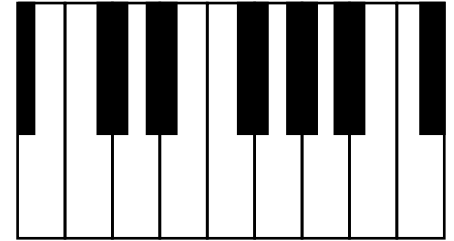
Bb MAJOR

Eb MAJOR

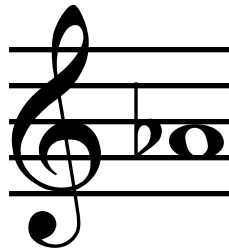
Theory 5, p. 2

The whole/half-step pattern for a major scale is W-W-H-W-W-W-H (W=whole, H=half).

1. **Using the pattern, notate the following major scales with whole notes.**
The first note for each scale is given for you. Use the keyboard to help you work out the rest.
2. **Draw a V between the 3rd-4th and 7th-8th notes.**
3. **Write in the letter names for each note as your last step.**



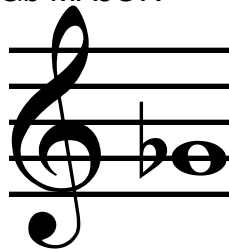
Ab MAJOR



Db MAJOR



Gb MAJOR



Cb MAJOR

