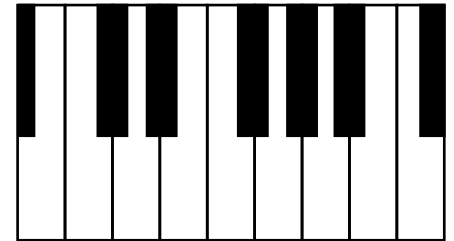


The whole/half-step pattern for a major scale is W-W-H-W-W-W-H (W=whole, H=half).

1. **Draw the whole notes.** The first note for each scale is given for you.
2. **Draw a V** between the 3rd-4th and 7th-8th notes.
3. Using your keyboard, **add the correct sharps** to make your scale fit the pattern.
4. **Write in the letter names** for each note as your last step.



G MAJOR

D MAJOR

Musical notation for G Major and D Major scales. Each scale is represented by a treble clef staff with a single whole note on the first line (G4 for G Major, D4 for D Major). Below each staff is a dashed line for writing.

A MAJOR

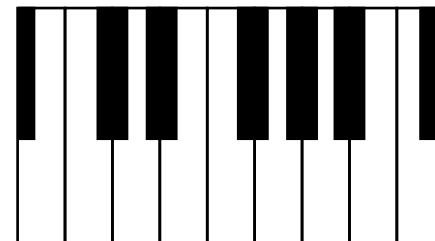
E MAJOR

Musical notation for A Major and E Major scales. Each scale is represented by a treble clef staff with a single whole note on the second line (A4 for A Major, E4 for E Major). Below each staff is a dashed line for writing.

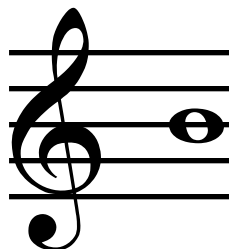
## Theory 6, p. 2

The whole/half-step pattern for a major scale is W-W-H-W-W-W-H (W=whole, H=half).

1. **Draw the whole notes.** The first note for each scale is given for you.
2. **Draw a V** between the 3rd-4th and 7th-8th notes.
3. Using your keyboard, **add the correct sharps** to make your scale fit the pattern.
4. **Write in the letter names** for each note as your last step.

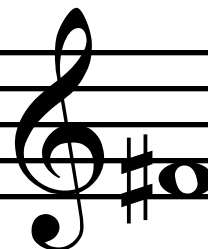


B MAJOR



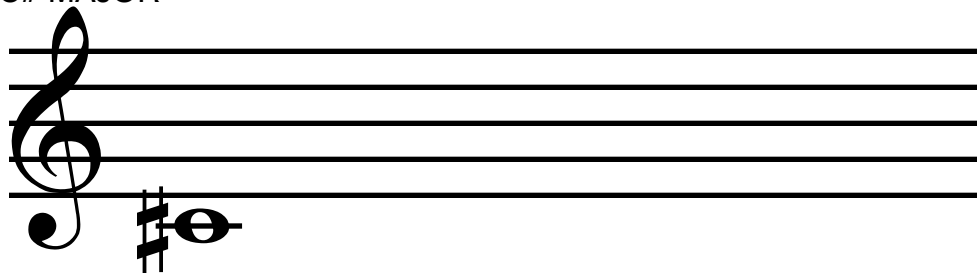
-----

F# MAJOR



-----

C# MAJOR



-----